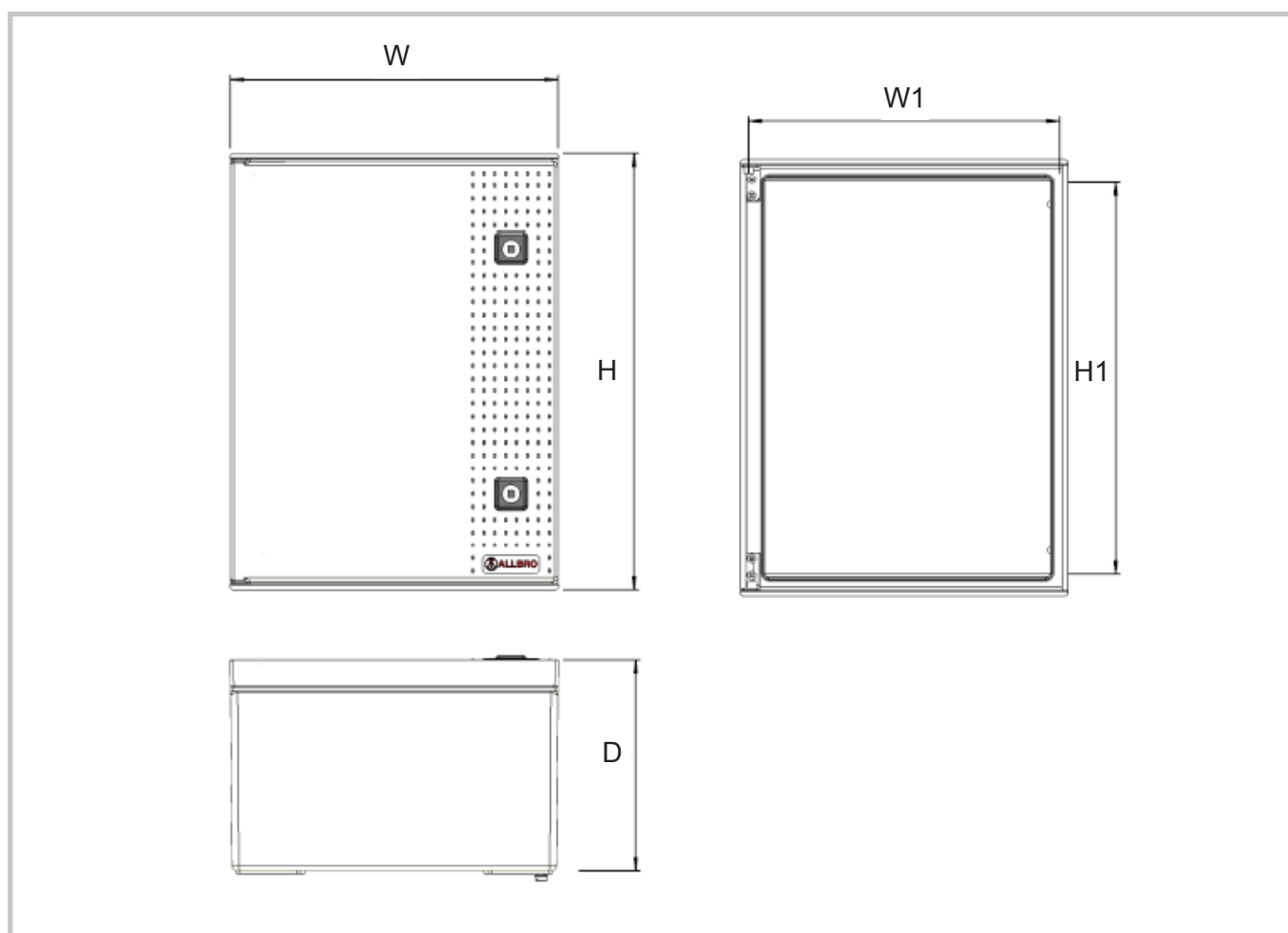


- External adjustable mounting bracket , horizontal, vertical or 45° angles
- Internal Stainless Steel hinges
- Mounting brackets are Stainless Steel
- DIN rail mount with M6 bolt and nut
- The height of the DIN rail is easily adjustable
- Removable door
- Steel device plate available on request.
- Material - SMC
- IP 66

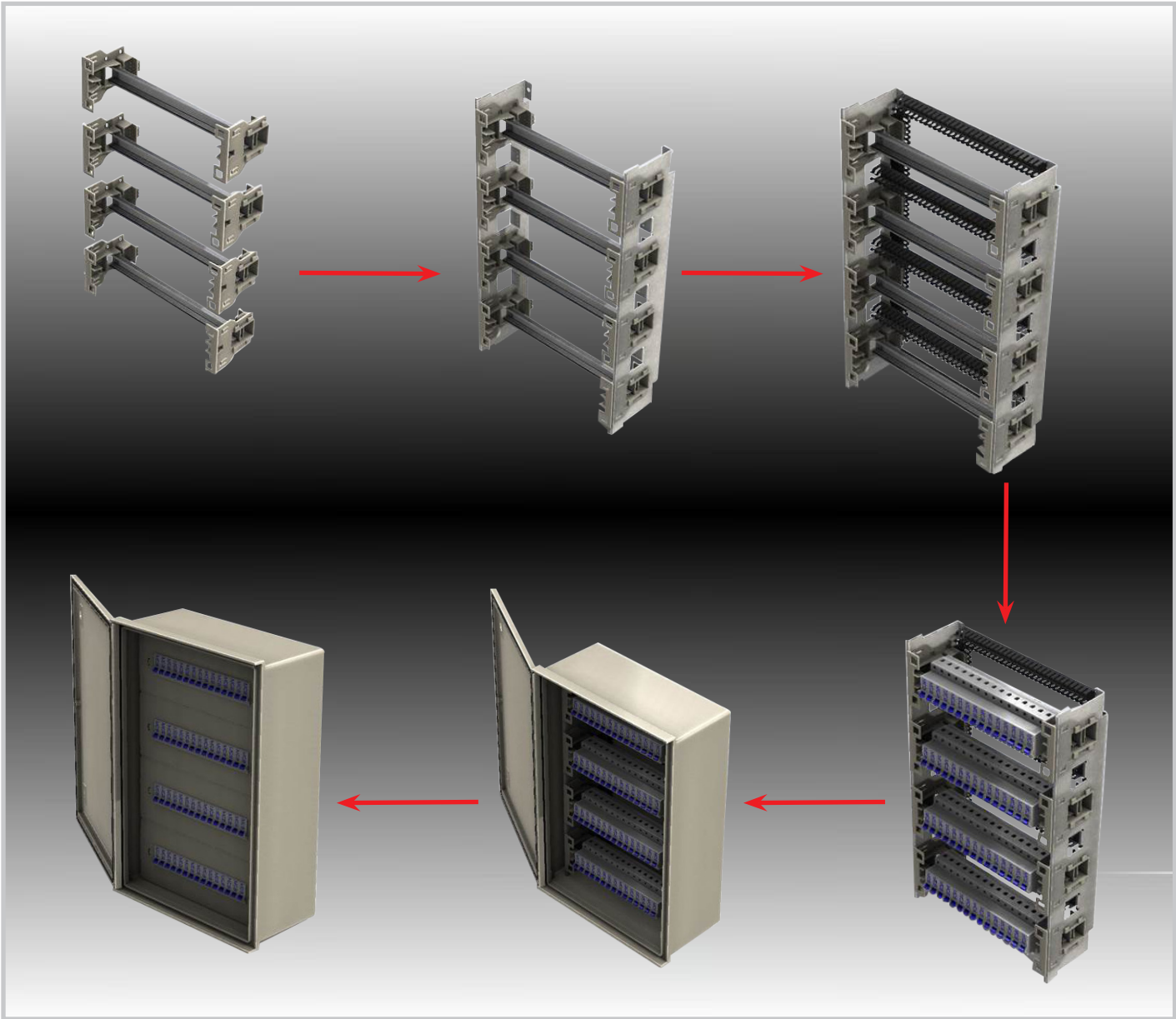




Part Number	Description	W	H	D	W1	H1
ALL-003	Allbrox 3 with SMC Device plate	250	350	200	235	310
ALL-004	Allbrox 4 with SMC Device plate	300	400	200	285	360
ALL-005	Allbrox 5 with SMC Device plate	350	500	200	335	460
ALL-006	Allbrox 6 with SMC Device plate	400	600	200	385	560
ALL-007	Allbrox 7 with SMC Device plate	750	750	320	658	658
ALL-008	Allbrox 8 with SMC Device plate	800	1000	320	706	906

Note: Galvanized steel plate available on request.



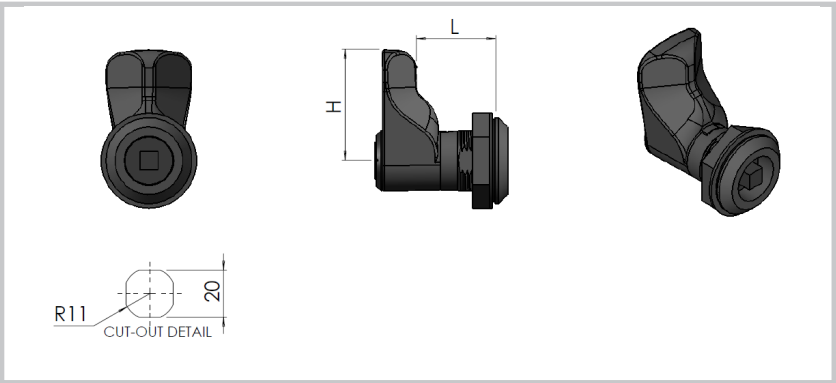


Part Number	Description	QTY
ALL-04/DB-KIT	Allbrox 4 Distribution Board Kit	1
ALL-05/DB-KIT	Allbrox 5 Distribution Board Kit	1
ALL-06/DB-KIT	Allbrox 6 Distribution Board Kit	1

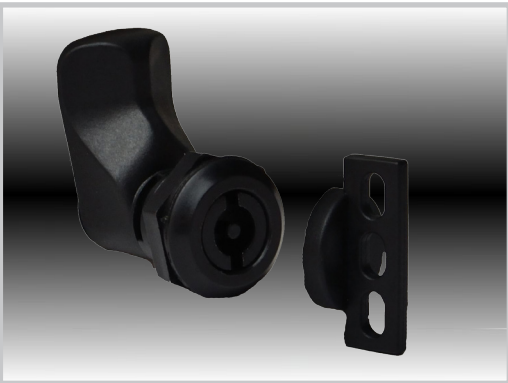
Lock and Swing Handle Options:



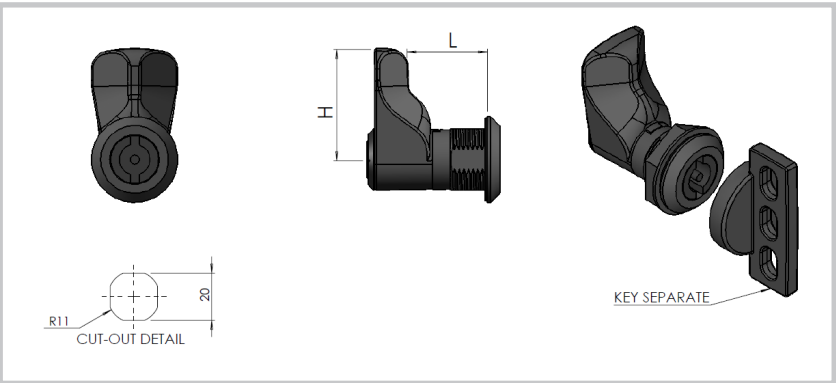
Remarks:
Quick assembly quarter turn with a 6 mm square drive.



Part Number	Description	H (mm)	L (mm)
22.1.026P	Polyamide Black	36	26



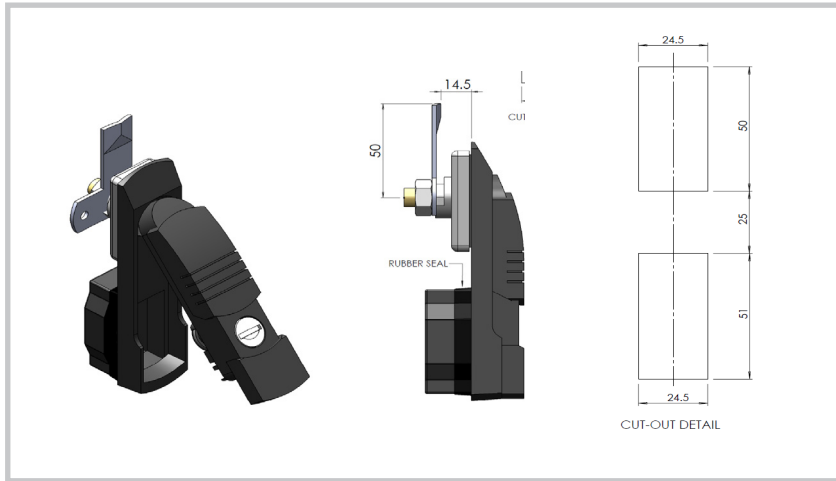
Remarks:
Quick assembly quarter turn with double bit drive.



Part Number	Description	H (mm)	L (mm)
22.1.026P-DB	Polyamide Black	36	26



Remarks:
IP65 swing handle.
Available in key alike and key different.



Part Number	Material and Finish	Description
FNSH/65	Nylon Matt black	Swing handle with profile cylinder, slide dust cap and rubber gasket with cap for IP65 rating