

Smart Metering

The CubelP Meter

The complete aM&T Energy Management System within a Meter



RJ45
Standard
CAT5

You install your *IPMeter*
You connect it to your IT Network

- The Meter Measures
- The Meter Logs
- You read the Meter with your web-browser

And ...

- For Data Security
The Meter transmits data to your Server

Energy Management at an affordable price

- **Totally Integrated** — Just one box to install
- **Retro-fit Option** — Available with split current sensors & a wall-mounted Enclosure
- **Expandable** — Use one or multiple Meters
- **No Special Software** — Uses you standard web browser
- **Prevent Excessive Demand** — Auto Alarm option available



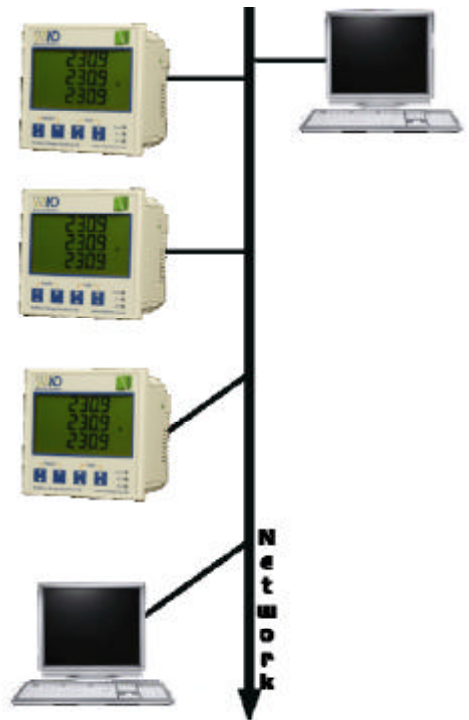
The Meter Logs & Profiles your consumption
The Meter can warn you if limits are exceeded

And ...

- Use the Meter to calculate your Energy Cost
And your CO₂ Emissions
- Use the Meter to compare your consumption against best practice
- Use your Meter Data to compare energy suppliers
- Use your Meter to control your Energy Consumption

And ...

- Use your Meter to monitor your Gas & Water
- Use your Meter to monitor Degree Days
- Use your Meter to monitor production



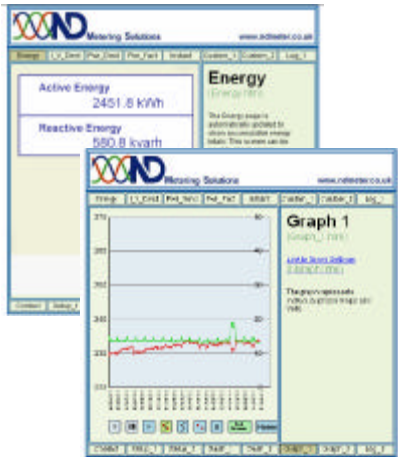
The Truly Smart Meter

- It Measures your Electricity
- It Logs the readings (for 2 months every ½ hour)
- It includes all the software you need to Manage your Energy

The Meters

Network connectivity is currently available on the **Cube IP 400** Meter. Network versions of the **Rail 350** and other multifunction Meters are in development. With these Meters, all readings - not just the Energies - can be accessed. Available Network options include:

- **External Managed Web Servers**
Allow access to Meters from outside the organisation without endangering network security, and provide regular data backup
- **Custom Web Pages**
The integral web site can be customised to order. Options include displaying readings from several **Cube IP** Smart Meters



The Integral Web-Site

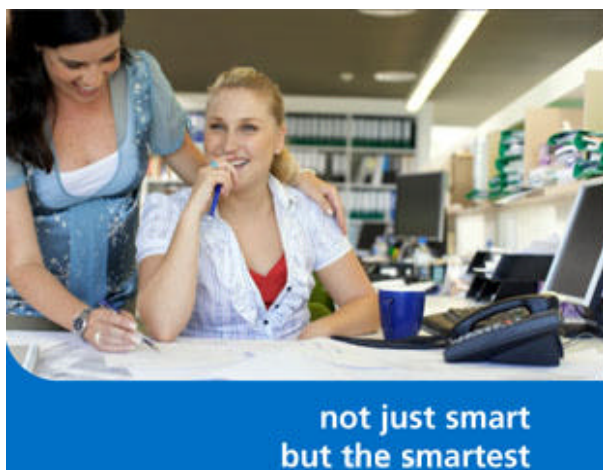
Accessed from any PC or PDA with the correct permissions. 16 screens available as standard; custom screens can be developed and uploaded. Every parameter measured by the meter is available for presentation. Configuration screens, for the Meter, for the network interface and for Data Logging and FTP transfer are provided.

An 'Excel Web Query' page allows direct import of selected data into any standard desktop application - such as a spreadsheet or word processor. Such data can be automatically updated if required

kWh	kvarh	Amp Dem 1	Amp Dem 2	Amp Dem 3	kW Dem	Pk kW Dem	kVA Dem	Pk kVA Dem	kW	PF	kvar	I Neut
25077	5921	127	138	92	92	107.2	98	121	79.3	0.95	26	3

The Options

- **Retro Fit**
Cube IP Smart Meters can be supplied as retro-fit kits, complete with a set of split Current Sensors. Available ranges include 50 Amp, 100 Amp, 150 Amp, 400 Amp & 800 Amp
- **Easy Install Enclosure**
Cube IP Smart Meters can be supplied complete with a wall mount enclosure. Alternatively, they can be installed in a standard electrical panel - all that is needed is a standard DIN 96x96 aperture
- **Inputs and Outputs**
Cube IP Smart Meters can be supplied with Digital Inputs & Outputs
The two **Digital Inputs** are available to read Gas or Water Meters, or any other device that has a pulse output (Production Counter)
The two **Digital Outputs** can be programmed as Alarms or to remotely control the operation of an item of plant



Really Smart Meters

Easy to Install

By any professional Electrician

Easy to Connect

Fully network enabled. Just plug into the nearest network socket

For remote connection, use a standard WiFi access point or Mains Network Interface

Easy to Read

Use your favourite web browser

Data Access

All measurements taken by the Meter are available to you when you need them - even in real-time !